

# SMARTCODE™

TOUCHPAD ELECTRONIC LOCKS



Quick Start Guide

3D instructions  
available on



# Welcome to the Weiser family!

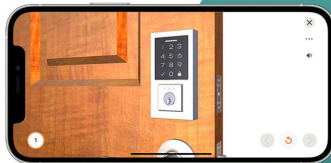
This guide will get you up and running with your new **SmartCode™ Lock**.

If you have any issues, please visit our support center: **Weiserlock.com** or call us at 1-800-501-9471.

# Table of contents

Parts in the box .....	4
Required tools .....	5
Installation.....	7
Programming guide .....	19

**BEFORE YOU BEGIN**

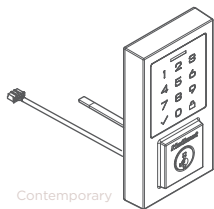


**Scan for easy 3D instructions**

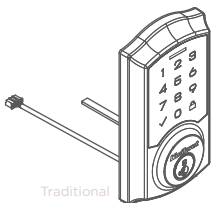
Download the BILT app before you begin



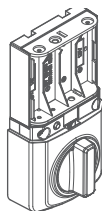
# Parts in the box



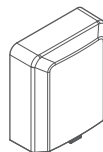
Contemporary



Traditional



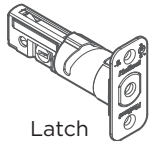
Interior assembly



Interior cover

Exterior assembly

## Step 1



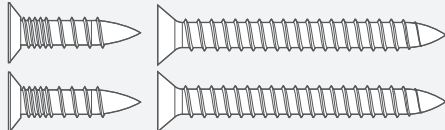
Latch



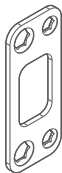
Collar

**03809**

*actual  
size*



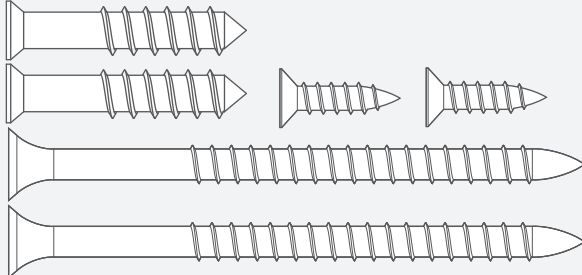
## Step 2



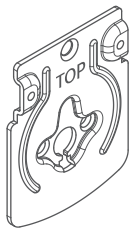
Strike

**52531**

*actual  
size*



### Step 3



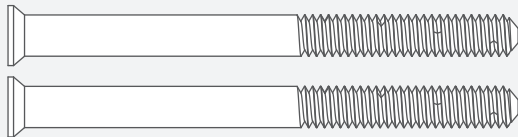
Mounting  
plate



Keys

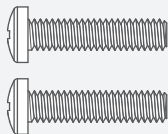
**52367**

*actual  
size*



**52502**

*actual  
size*



### Step 4



SmartKey™ tool  
with instructions

## Required tools



Philips  
screwdriver

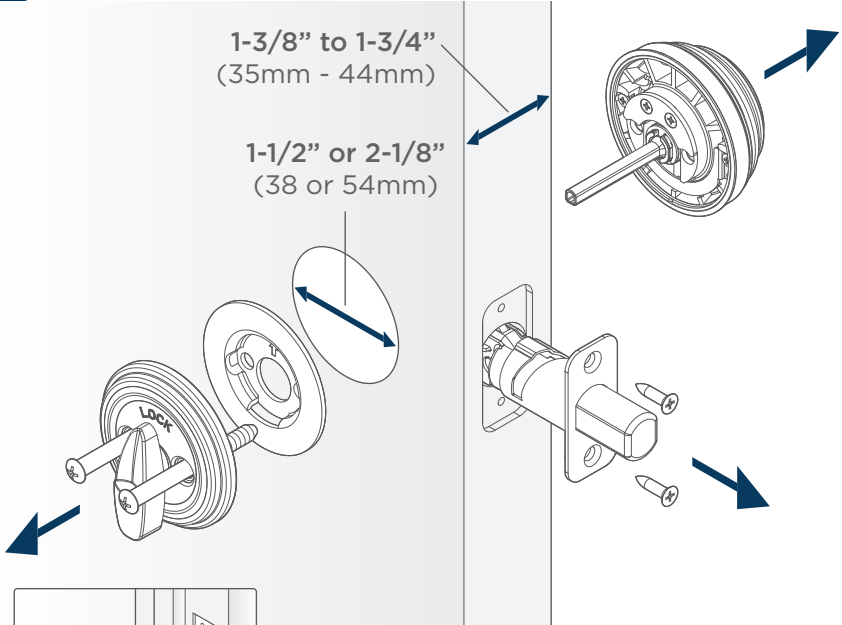
 No electric drills

# Installation

**!** Remove your existing deadbolt and strike

1-3/8" to 1-3/4"  
(35mm - 44mm)

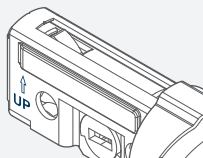
1-1/2" or 2-1/8"  
(38 or 54mm)



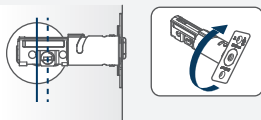
  If drilling a new door, use the supplied template and instructions available at: [weiserlock.com/doorprep](https://weiserlock.com/doorprep)

# 1 Install the latch

**A** UP is on top.



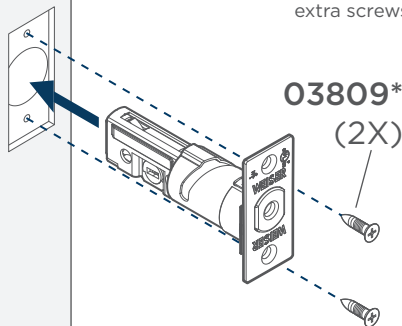
**B** If the rectangle shaped hole is not centered in the door hole, rotate the latch face to extend the latch.



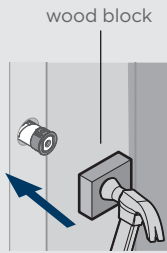
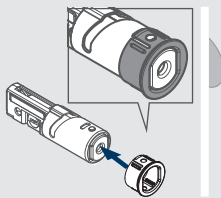
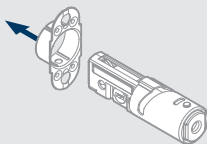
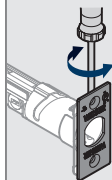
[OUTSIDE]

\*Use the longer screws if the holes are worn out.

You will have two extra screws.

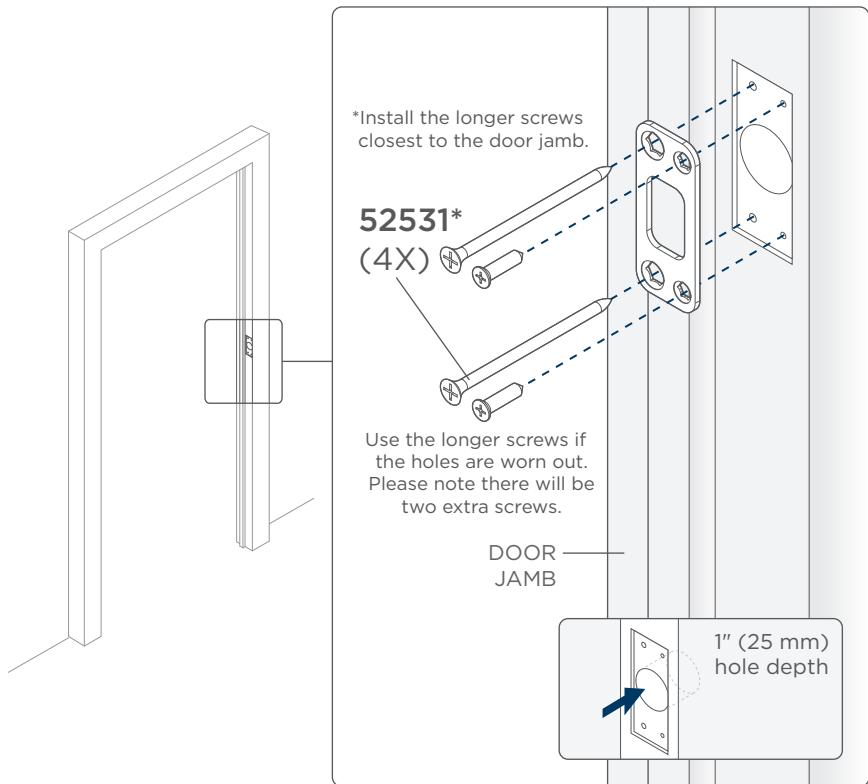


**!** If your door is not chiseled, install the drive-in collar.

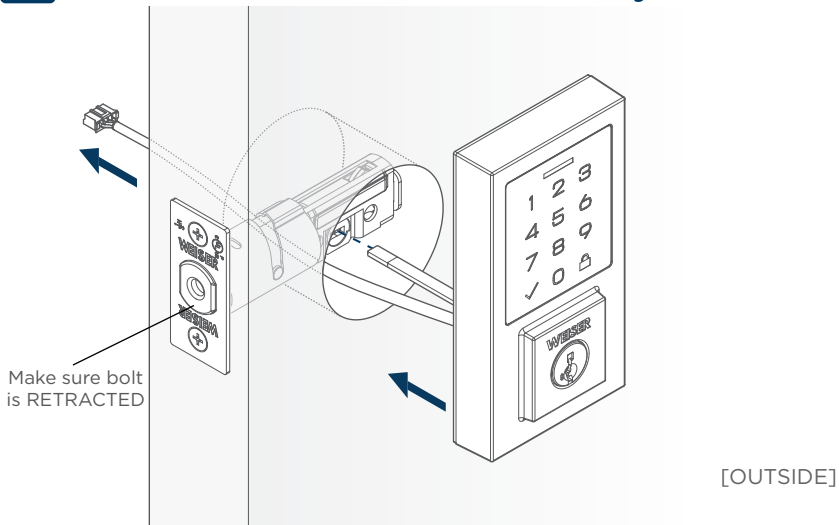





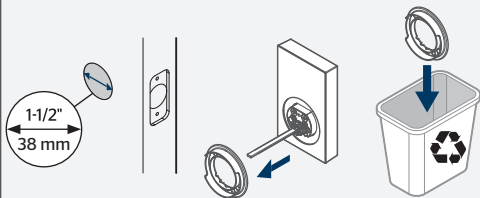
## 2 Install the strike



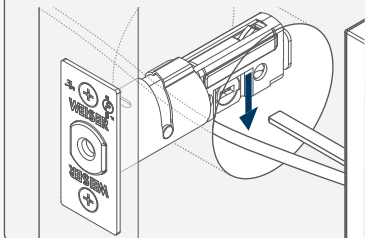
### 3.1 Install the exterior assembly



 If your door hole is 1-1/2" (38mm), remove the adapter ring, and discard it.



**A** Route cable under the latch.



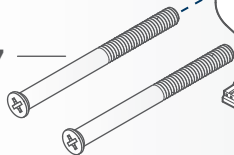
Tighten the screws evenly.  
**DO NOT** over-tighten.



Keep parallel to  
the door edge

TOP on the  
mounting plate  
should be visible

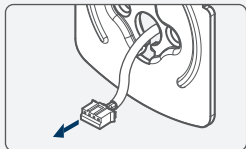
**52367**  
(2X)



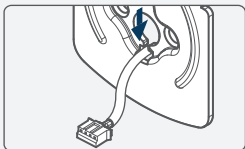
[INSIDE]

Make sure the flat  
blade is centered in the  
mounting plate hole.

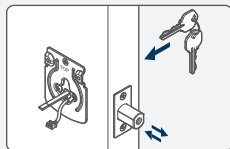
- B** Route the cable  
through the  
center hole of the  
mounting plate.




- C** Push the cable into  
the bottom hole of  
the mounting plate.

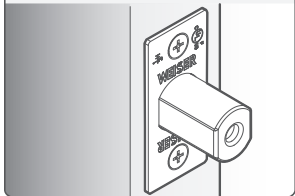



- D** Insert the key and test  
the latch. If the latch  
does not extend or  
retract smoothly, adjust  
the screws. Leave bolt  
LOCKED/EXTENDED.

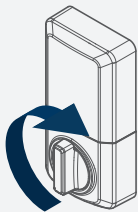


## 3.2 Install the interior assembly

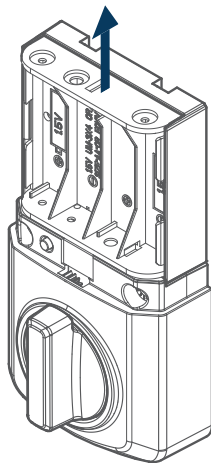
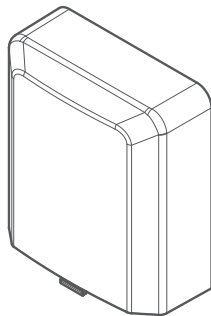
-  Check to make sure the latch bolt is in the extended/locked position to install the interior assembly.



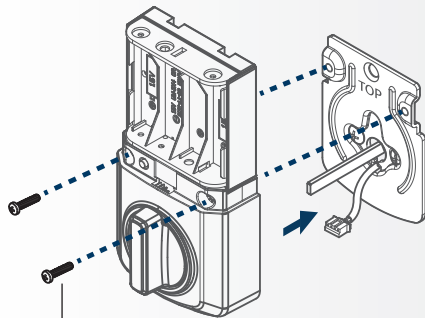
-  If the turnpiece is not pointing up, rotate the turnpiece until you hear a click.



Remove the interior cover from the interior assembly.



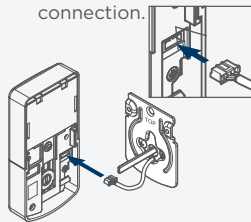
Secure the interior assembly  
onto the mounting plate.



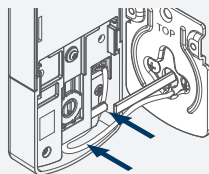
52502  
(2X)

[INSIDE]

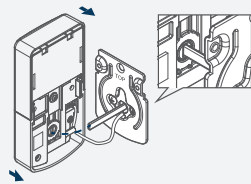
- A** Connect the cable.  
Ensure a tight cable  
connection.



- B** Route cable around  
the side notch and  
bottom of the interior  
assembly.

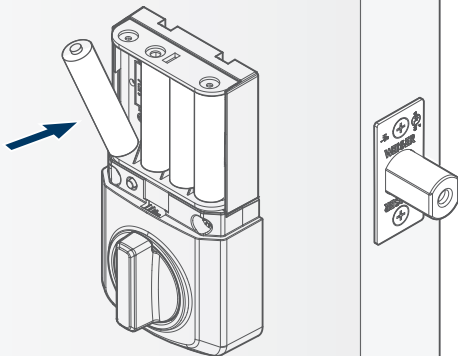


- C** Insert the flat blade  
into the turnpiece shaft.



## 4 Install the AA Batteries

Ensure the door is open while installing batteries.



Note: Batteries are not included

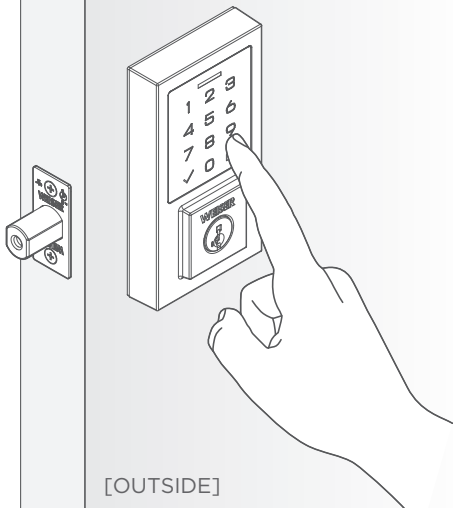
- ⚠ Ensure correct polarity. For best results, use new, non-rechargeable Alkaline batteries only.

[INSIDE]

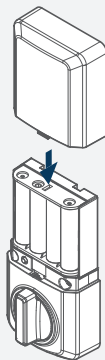
## 5 Add a User Code and Install Cover

Add a User Code per instructions on page 19.

After the first User Code is created, the latch bolt will automatically retract and extend to learn the locking and unlocking direction of the door.



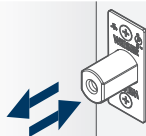
Secure the interior cover onto the interior assembly.



Bolt will extend and retract to learn the orientation of the door.

Keypad will indicate success or failure.

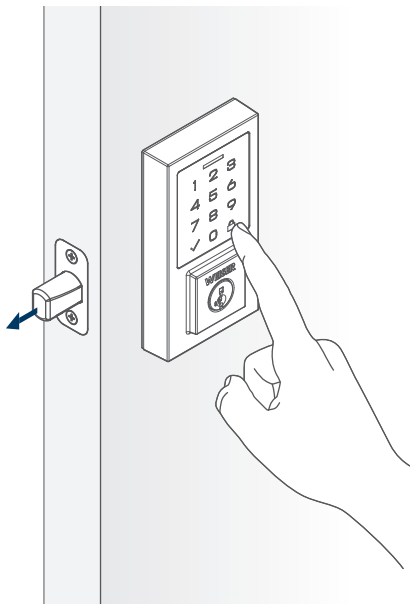
Green: Door handing was successful.  
Red: Door handing was unsuccessful.  
Make sure the interior and batteries are correctly installed.



- ⚠ Before you can lock or unlock the door a User Code must be created. Refer to page 19 for instructions on how to create a User Code.

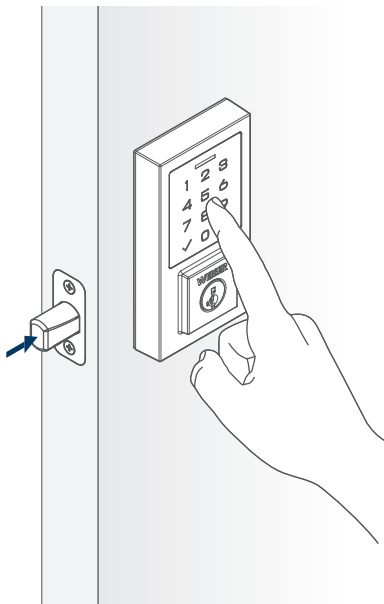
## Locking

To lock your door, press the Lock button. The lock will beep and the keypad will flash amber as the bolt extends.



## Unlocking

To unlock your door, enter the User Code. The lock will beep and the keypad will flash green and beep twice as the bolt retracts.

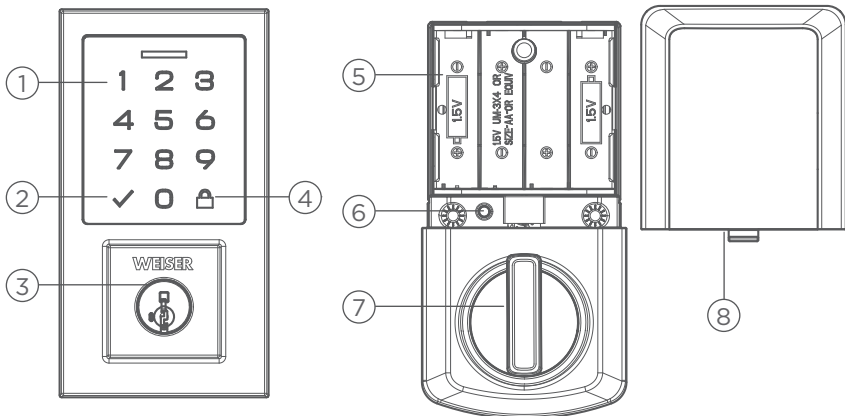




# SmartCode™ at a Glance

Exterior

Interior

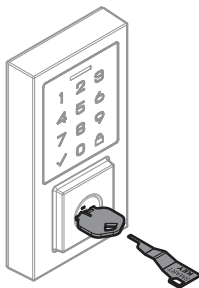


- 1. Number Buttons**  
Used to enter User Codes. Each code must be 4 to 8 digits in length.
- 2. Checkmark**  
Used for programming.
- 3. SmartKey Cylinder**  
Rekeyable cylinder retracts and extends the latch bolt by key from the exterior.
- 4. Lock Button**  
Used for programming, clearing User Code entry errors, lighting up the keypad and locking the door.
- 5. Battery Holder**  
Uses 4 AA Alkaline batteries, 1.5V
- 6. Programming Button**  
Used for programming functions.
- 7. Turnpiece**  
Lock and unlock from the interior.
- 8. Battery Cover**  
Push it upward and outward to replace the batteries.

# SmartKey Re-Keying

Re-key the lock to work with your existing key. See the supplied SmartKey Re-key instructions for more information.

Note: If Auto-Lock is enabled, remove the batteries before re-keying your lock.




## System Alerts

Operation	Lights	Sounds	Explanation	Troubleshoot
Unlock	Flashes GREEN x2	2 beeps	Successful unlock	
	Flashes RED x10	10 beeps	Low battery	Install fresh new batteries
	Flashes RED x 3	3 beeps	Incorrect User Code	Check code, and retry
	Flashes RED x15	15 beeps	Exceed 3 incorrect User Code attempts	Wait 1 minute, check code, and retry
Lock	Flashes AMBER x2	2 beeps	Successful lock	
	Flashes RED x10	10 beeps	Low battery	Install fresh new batteries
	Alternate RED/WHITE Flash x5	5 beeps	Stuck/Jammed bolt	Clear jam and try again
Factory Reset	Flashes GREEN x1	1 beep	Successful	
	Flashes RED x3	3 beeps	Unsuccessful	Retry factory reset steps. Make sure to press the Programming Button one more time within 10 seconds after the long beep.
Programming	Flashes GREEN x1	1 beep	Successful	
	Flashes RED x3	3 beeps	Unsuccessful	Review Programming steps

# Programming

Ensure the door is open before performing any programming.

The programming button is located on the interior chassis below the battery holder (refer to page 17). During programming, if no button is pressed within 5 seconds, the system will time out and you will need to restart the procedure.

Add User Code (UC)	Programming Button → 1 → ✓ → enter UC → ✓
Delete Individual User Codes (UC)	Programming Button → 2 → ✓ → enter UC to delete → ✓ → enter UC to delete → ✓
Add/Change Programming Code (PC)	Programming Button → 3 → ✓ → enter PC → ✓
Delete all User Codes	Programming Button → 4 → ✓ → 4 → ✓
Enable/Disable Audio	Programming Button → 5 → ✓
Enable/Disable User Codes	Programming Button → 6 → ✓
Add One-time User Code	Programming Button → 7 → ✓ → enter one-time UC → ✓
Change Auto-Lock Time Delay	Programming Button → 8 → ✓ → press button for delay → ✓ 1) 30 seconds 2) 1 minute 3) 3 minutes 4) 5 minutes 5) 10 minutes
Enable/Disable Auto-Lock	Programming Button → 9 → ✓
Door Rehanding	Programming Button → 0 → 
Factory Reset	Press and HOLD Programming Button for 15 seconds → Programming Button again

# Programming Notes

## **Add User Code:**

Up to 50 User Codes can be saved. User Codes should be 4 to 8 digits in length.

For security reasons, the first 4 digits of each User Code must be unique. For example, you are unable to program a User Code 1-2-3-4-5 as well as a User Code 1-2-3-4-6.

Press the lock button before entering your code to light up the keypad at night.

## **Enable/Disable Programming Code:**

Optional: A Programming Code enables you to make programming changes without needing to access the programming button. This is ideal for landlords to allow programming from the outside without access to the interior programming button.

One Programming Code can be saved and should be 4 to 8 digits in length.

The Programming Code can not be the same as any User Code and will not unlock the lock.

To program the lock when the Programming Code is enabled, instead of pressing the programming button, enter the Programming Code, press the checkmark and proceed with the remaining steps on page 19. Repeat the programming steps to disable the Programming Code. Please note once a Programming Code is enabled, the programming button is disabled and can only be used to factory reset the lock.

## **Delete All User Codes:**

Keypad locking function will be disabled when User Codes are deleted. The lock can only be operated manually by key during this time.

## **Enable/Disable Audio:**

LED status indicator will still function once audio is disabled. Repeat the programming steps to enable the audio.

# Programming Notes

## **Enable/Disable User Codes:**

When all User Codes are disabled, all electronic functions will be disabled as well. The door must be locked or unlocked manually with the key. Repeat the programming steps to enable the User Codes.

## **Add One-Time Use Code:**

Up to 10 One-time User Codes can be saved. One-time User Codes should be 4 to 8 digits in length. The One-Time User Code will be deleted automatically after it is used. The same One-Time User Code can be created again after it's used.

## **Change Auto-Lock Time Delay:**

Press the keypad number that corresponds to your time delay preference:

"1": 30 seconds    "2": 1 minute    "3": 3 minutes    "4": 5 minutes    "5": 10 minutes

## **Enable/Disable AutoLock:**

The default setting is disabled. Once you enable auto-lock the default setting is set to 30 seconds.

To change the auto lock time delay, see the "Change Auto-Lock Time Delay" programming step.

Repeat the programming steps to disable auto-lock.

## **Door Rehandling Identification:**

Perform this process for the lock to learn the locking and unlocking direction of the door.


This feature is used for the lock to learn the orientation of your door (left- or right-handed). If stuck/jammed bolt error continues to occur after performing this step, please make sure there is no obstruction from strike or door jamb to prevent the bolt from extending.


## **Factory Reset:**

A factory reset will delete all User Codes and change all programming to factory settings.

# Important Safeguards

1. Read all instructions in their entirety.
2. Familiarize yourself with all warning and caution statements.
3. Remind all family members of safety precautions.
4. Always have access to your lock's standard key.
5. If using the Auto-Lock features, make sure you have your smartphone or standard key with you to prevent locking yourself out.
6. Familiarize yourself with the system alerts.
7. Replace low batteries immediately.
8. Dispose of used batteries according to local laws and regulations.

 **WARNING:** This Manufacturer advises that no lock can provide complete security by itself. This lock may be defeated by forcible or technical means, or evaded by entry elsewhere on the property. No lock can substitute for caution, awareness of your environment, and common sense. Builder's hardware is available in multiple performance grades to suit the application. In order to enhance security and reduce risk, you should consult a qualified locksmith or other security professional.

 **CAUTION:** Prevent unauthorized entry. Since anyone with access to the back panel can change the User Codes, you must restrict access to the back panel and routinely check the User Codes to ensure they have not been altered without your knowledge. The use of a programming code can help protect your system's settings.

---

## Regulatory Compliance

This product complies with standards established by the following regulatory bodies:

- Federal Communications Commission (FCC)
- Industry Canada

### FCC

This device complies with Part 15 of the FCC Rules. Operation is subject to the following two conditions:

( 1 ) this device may not cause harmful interference, and ( 2 ) this device must accept any interference received, including interference that may cause undesired operation.

This equipment has been tested and found to comply with the limits for a Class B digital device, pursuant to Part 15 of the FCC Rules. These limits are designed to provide reasonable protection against harmful interference in a residential installation.

This equipment generates, uses, and can radiate radio frequency energy

and, if not installed and used in accordance with the instructions, may cause harmful interference to radio communications. However, there is no guarantee that interference will not occur in a particular installation. If this equipment does cause harmful interference to radio or television reception, which can be determined by turning the equipment off and on, the user is encouraged to try to correct the interference by one or more of the following measures:

- Reorient or relocate the receiving antenna.
- Increase the separation between the equipment and receiver.
- Connect the equipment into an outlet on a circuit different from that to which the receiver is connected.
- Consult the dealer or an experienced radio/TV technician for help.

**IMPORTANT!** Changes or modifications not expressly approved by the manufacturer could void the user's authority to operate the equipment.

### Industry Canada

This device contains licence-exempt transmitter(s)/receiver(s) that comply with Innovation, Science and Economic Development Canada's licence-exempt RSS(s). Operation is subject to the following two conditions: ( 1 ) This device may not cause interference, and ( 2 ) This device must accept any interference, including interference that may cause undesired operation of the device.

- CAN ICES-3(B) / NMB-3(B)