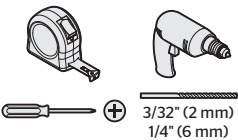
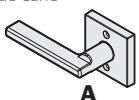
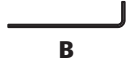
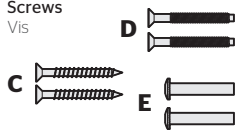
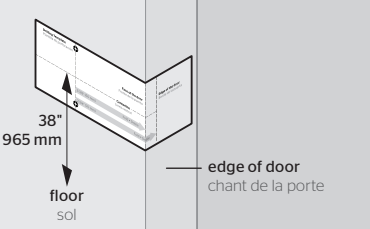


Required tools Outils nécessaires	Parts in the box Pièces dans la boîte	Allen wrench Clé Allen	Screws Vis
 <p>3/32" (2 mm) 1/4" (6 mm)</p>	 <p>A</p>	 <p>B</p>	 <p>C D E</p>


1 Prepare door Préparez la porte

A **Cut out template and fold along fold line for desired backset. Place fold line on edge of door with centerline 38" (965 mm) from floor.**

Découpez le gabarit et pliez-le le long de la ligne de pliage pour l'écartement souhaité. Placez la ligne de pliage sur le chant de la porte, l'axe central à environ 965 mm (38 po) du sol.



B **Mark holes**
Marquez les trous



C **Drill holes**
Percez les trous

Wood door
Porte en bois

3/32" 2 mm

2x

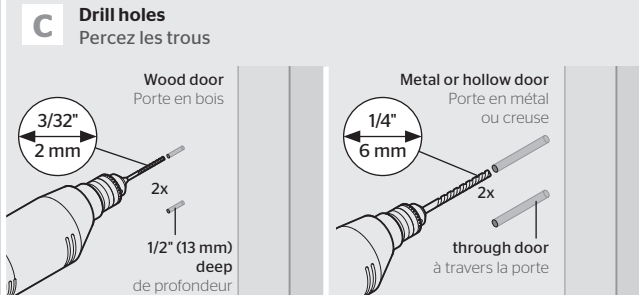
1/2" (13 mm) deep
de profondeur

Metal or hollow door
Porte en métal ou creuse

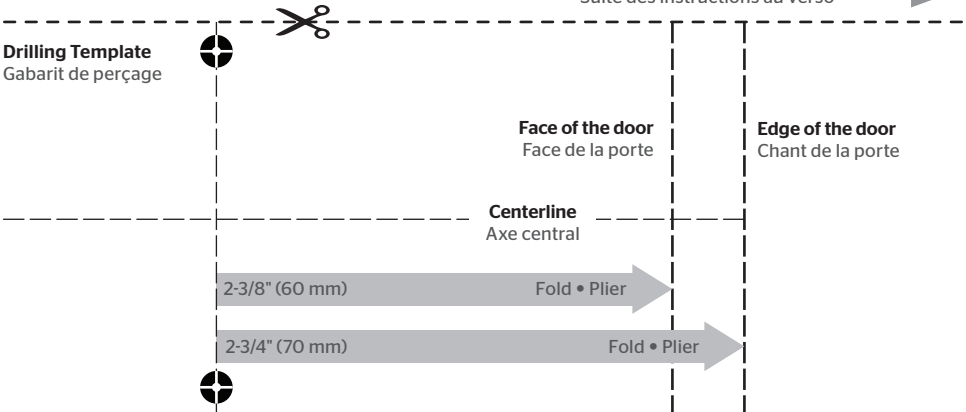
1/4" 6 mm

2x

through door
à travers la porte



Instructions continue on reverse
Suite des instructions au verso

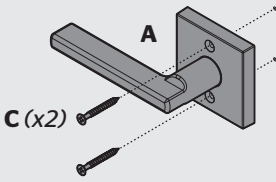


2

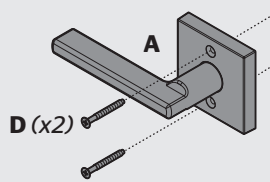
Install lever Posez le bec-de-cane

A Install lever Posez le bec-de-cane

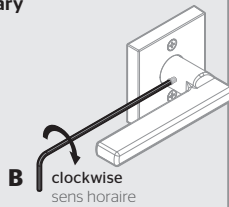
Wood door
Porte en bois



Metal or hollow door
Porte en métal ou creuse



B Tighten set screw, if necessary Serrez la vis de pression, si nécessaire



©2018 Spectrum Brands, Inc.

Drilling Template Gabarit de perçage

Edge of the door
Chant de la porte

Face of the door
Face de la porte

Centerline
Axe central

Fold • Plier 2-3/8" (60 mm)

Fold • Plier 2-3/4" (70 mm)

